

# Evaluation of the Medical and Psychological Assessment (MPA) in Germany

Horst Ziegler<sup>2</sup>, Norbert Hilger<sup>1</sup>, Georg Rudinger<sup>1</sup>, Don DeVol<sup>2</sup>, Johannes Jansen<sup>2</sup>, Gerhard Laub<sup>2</sup>, Karin Müller<sup>2</sup>, Wolfgang Schubert<sup>2</sup>

<sup>1</sup> University of Bonn, Center for Evaluation and Methods ZEM

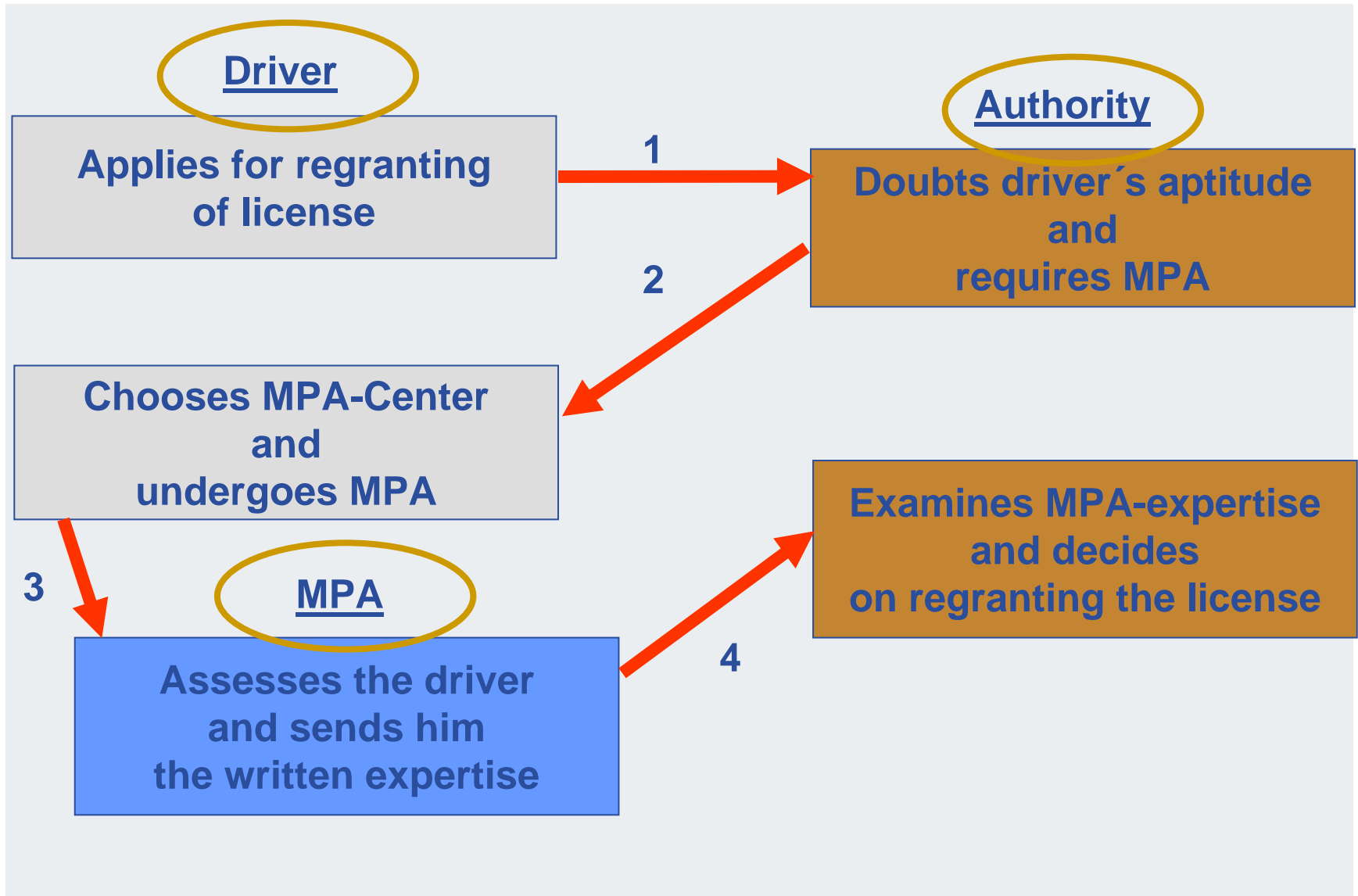
<sup>2</sup> Association of Technical Control Boards VdTÜV

# Agenda

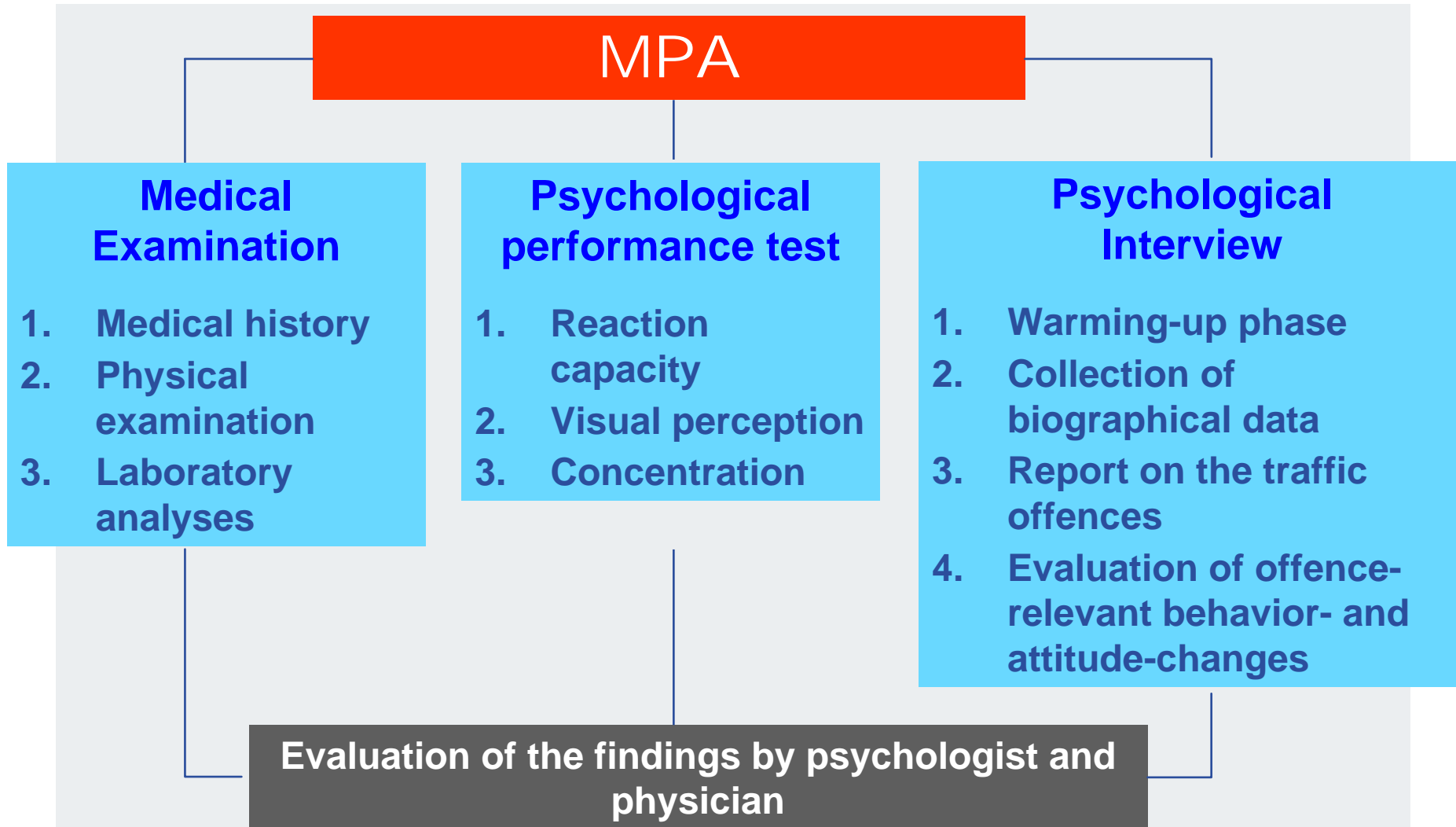
## Agenda

1. Starting point
2. Questions
3. Study design
4. Results
5. Summary

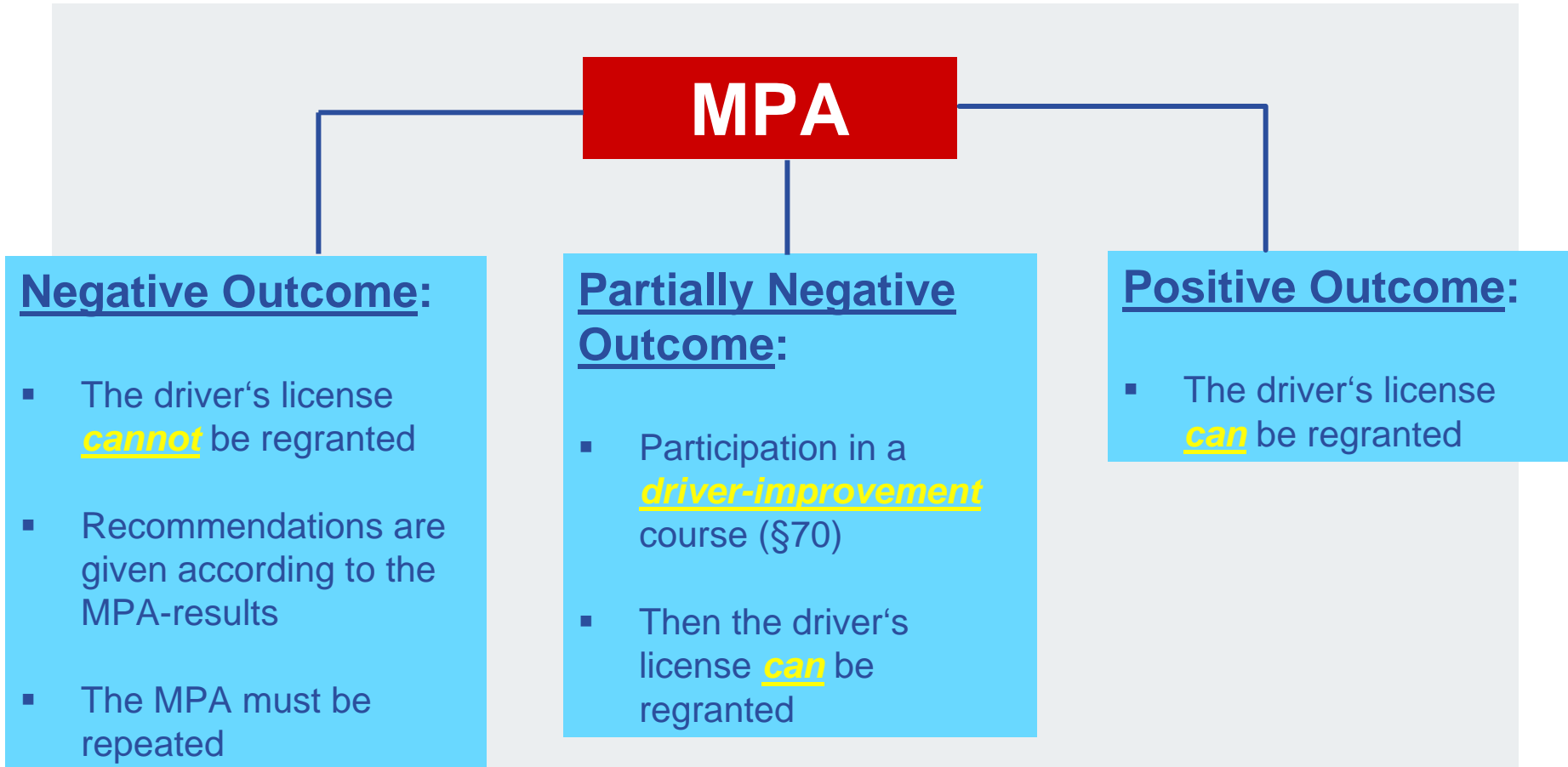
# Medical-Psychological Assessment



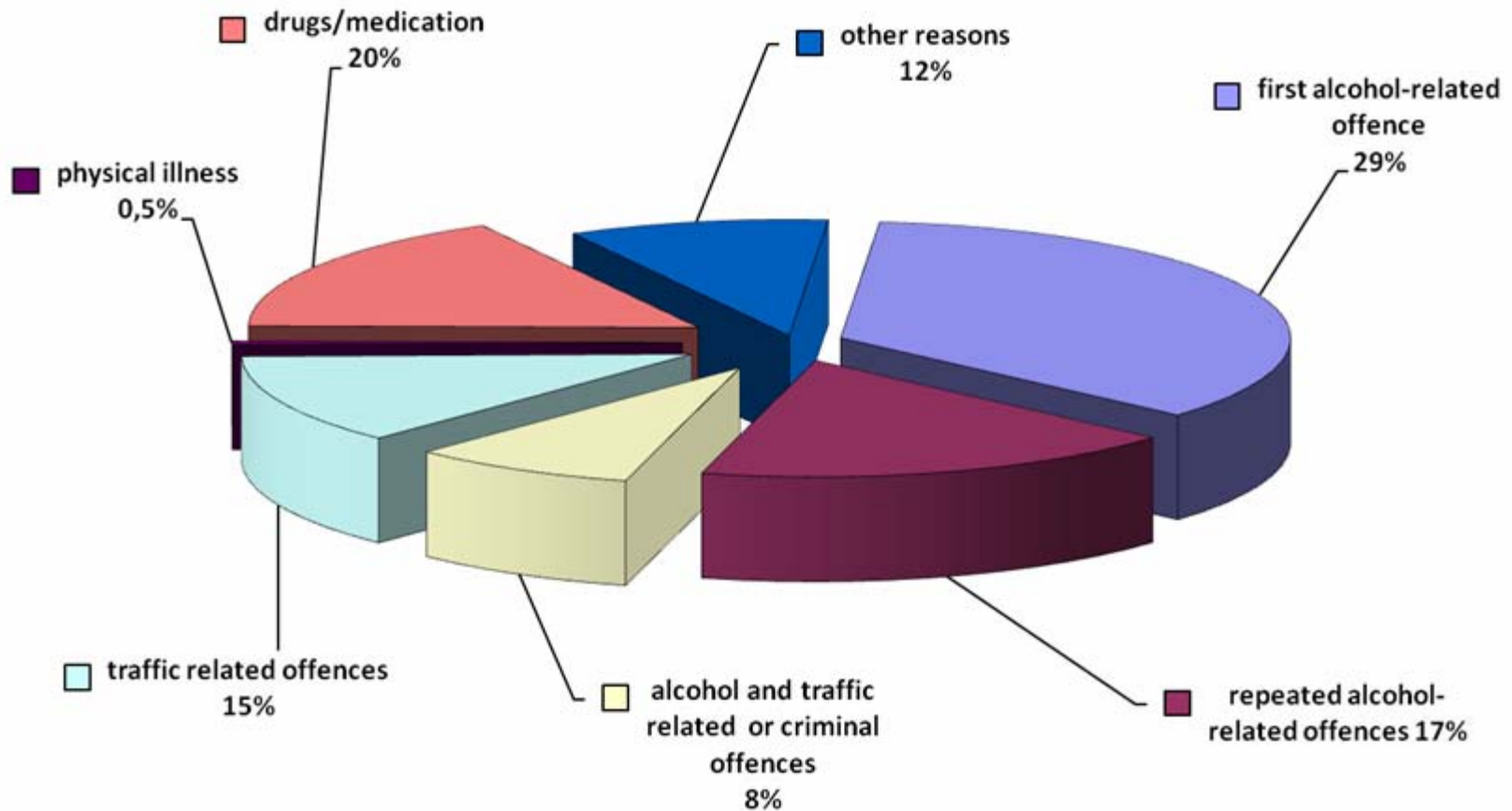
# Medical-Psychological Assessment



# Possible Outcomes of the MPA

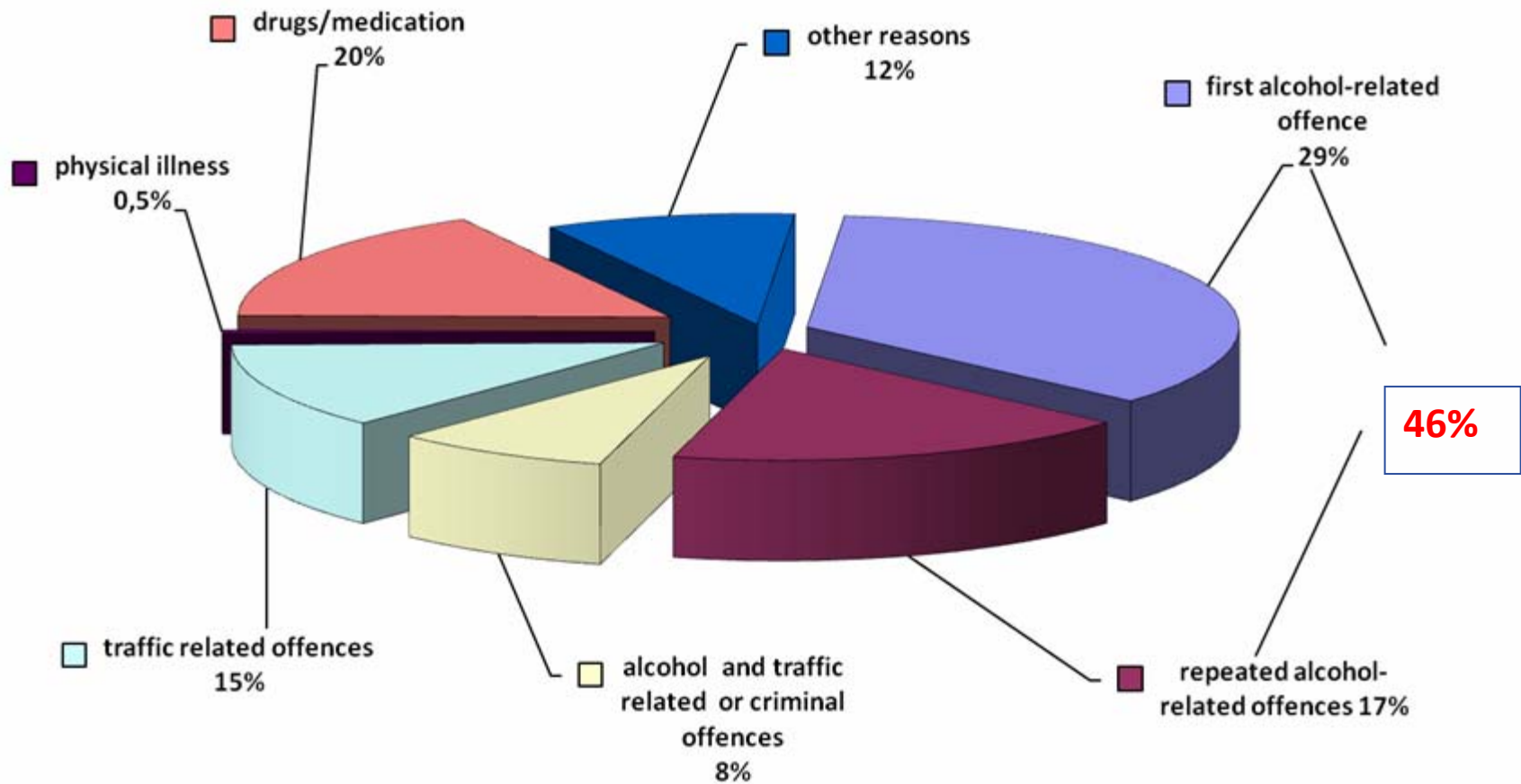


# MPA in Germany 2010



about 100.000 MPA in 2010:

# MPA in Germany 2010



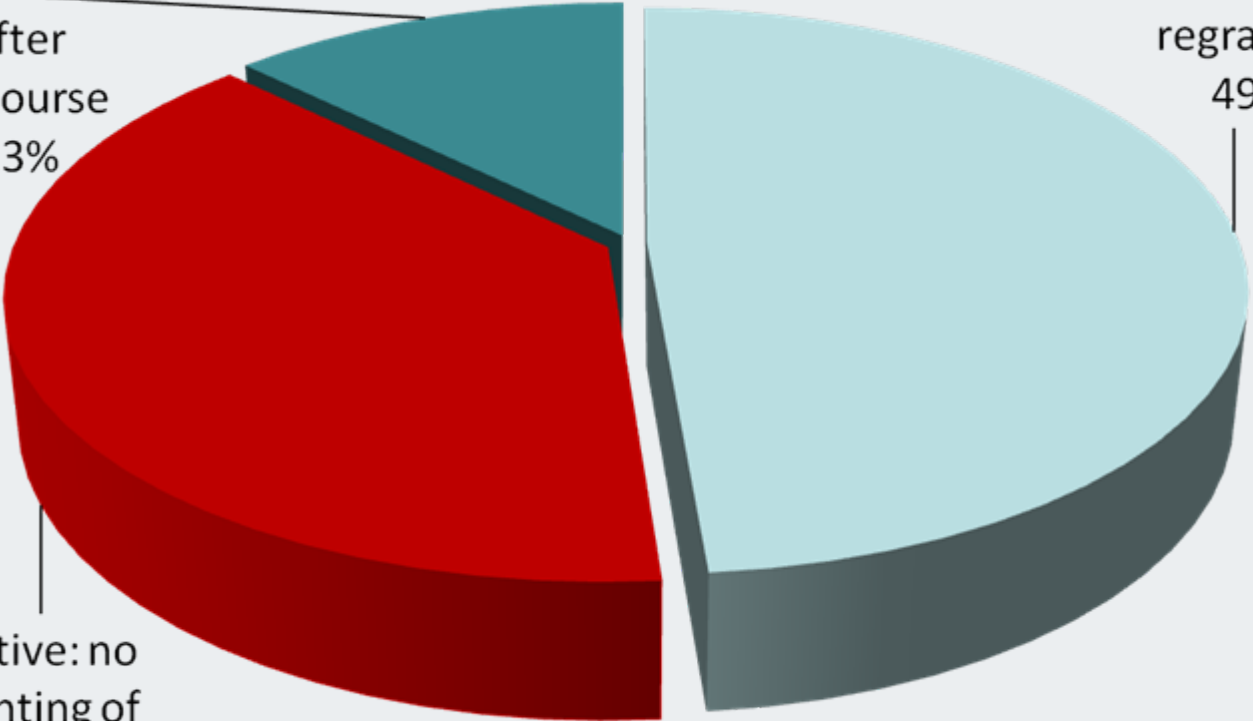
# MPA results 2010 (alcohol related cases only)



Rehab: License  
regranted  
after  
DI course  
13%

Positive:  
License  
regranted  
49%

Negative: no  
regranting of  
license  
38%





# Starting point 2008

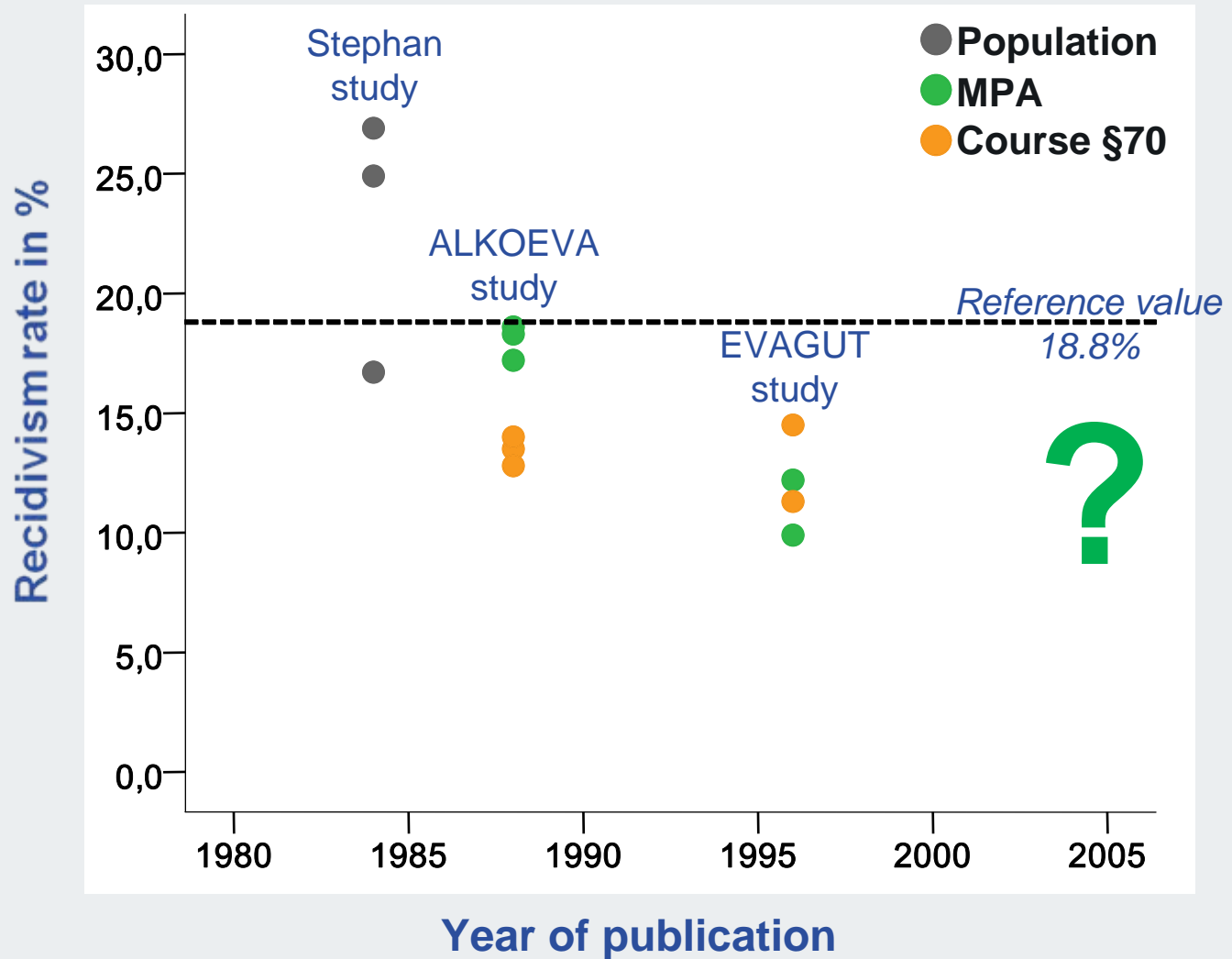
## Reasons for the study

- No up-to-date recidivism figures available for the MPA in relation to drink-driving
- Further development and standardized application of the MPA assessment criteria
- Repeated examination of effectiveness of driver's license measures necessary

## Intermediate changes of conditions

- Introduction of the 0.5 ‰ legal alcohol limit for drink-driving
- Changes in the framework conditions in Germany, including development and expansion of psychological advisory measures

# The data position in 2008



# Starting point 2008

---

## Organisations in the Association of Technical Control Boards (VdTÜV) and the University of Bonn – ZEM

---

ABV (TÜV Rheinland)

DEKRA

TÜV Hessen

TÜV Nord

TÜV SÜD

TÜV Thüringen

# Questions

1. How high are the recidivism rates of drink-drivers after an MPA in Germany?
2. Do the recidivism rates of drivers with a positive MPA outcome differ from those of drivers who have to undergo a § 70 driver improvement course?
3. How do the recidivism rates of drink-drivers without an MPA compare?

# Study design

- Retrospective recidivism analysis based on the Central Traffic Register (VZR)
- Drawing a sample of MPA clients from the records of members of the Association of Technical Control Boards (VdTÜV)
- **MPA sample**
  - drink-drivers
  - male MPA clients without other offences
  - first drink-driving offence vs. multiple drink-driving offences
  - positive prognosis vs. § 70 DI-course
  - proportional sampling in accordance with the distribution of MPA alcohol cases in 2006 for the participating organisations (VdTÜV)

# Study design

- **Control group: Alcohol-related offence (OWi) sample**
  - men with a first alcohol-related offence
  - stratified according to state-by-state distribution of the MPA groups
  
- **Data collection period:** 11/2005 – 10/2006

- **Sample sizes**

		Alcohol	
		first offence	repeated
MPA	positive	<i>n</i> = 400	<i>n</i> = 400
	§ 70	<i>n</i> = 400	<i>n</i> = 400
OWi		<i>n</i> = 3,200	

- **Recidivism criterion:** drink-driving offence within three years

# Hypotheses

In connection with the predictive validity of the MPA and the effectiveness of § 70 courses, the following hypotheses can be established:

- The recidivism probabilities of the MPA groups are not higher than the recidivism probability of the OWi group
- The recidivism probabilities of the MPA groups are the same

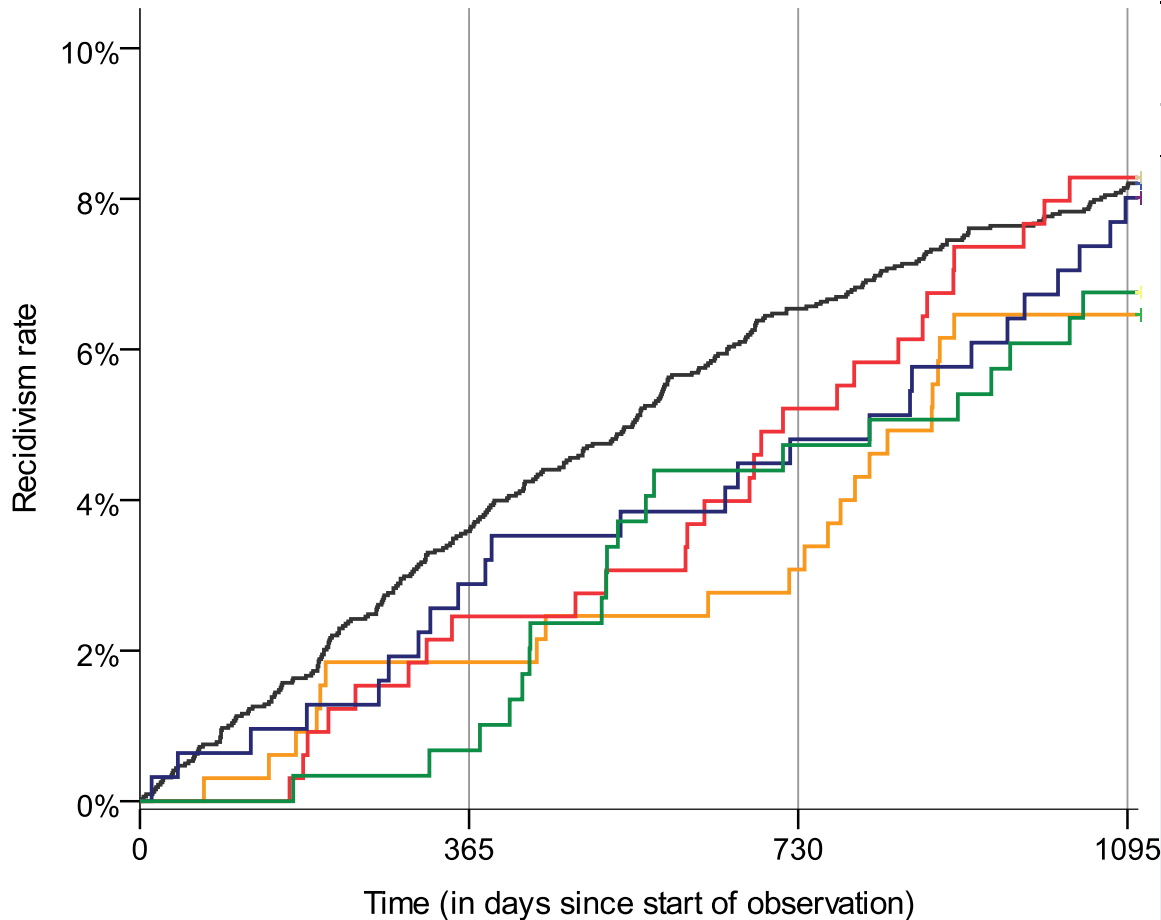
# Recidivism rates

		Alcohol	
		first offence	repeated
MPA	positive	6.5% (21/325)	8.3% (27/326)
	§ 70	8.0% (25/312)	6.8% (20/296)
OWi		8.2% (261/3180)	

- The recidivism probabilities of the MPA groups **are not higher** than the recidivism probability of the OWi group.
- The recidivism probabilities of the MPA groups **do not differ** significantly ( $p = .768$ ).



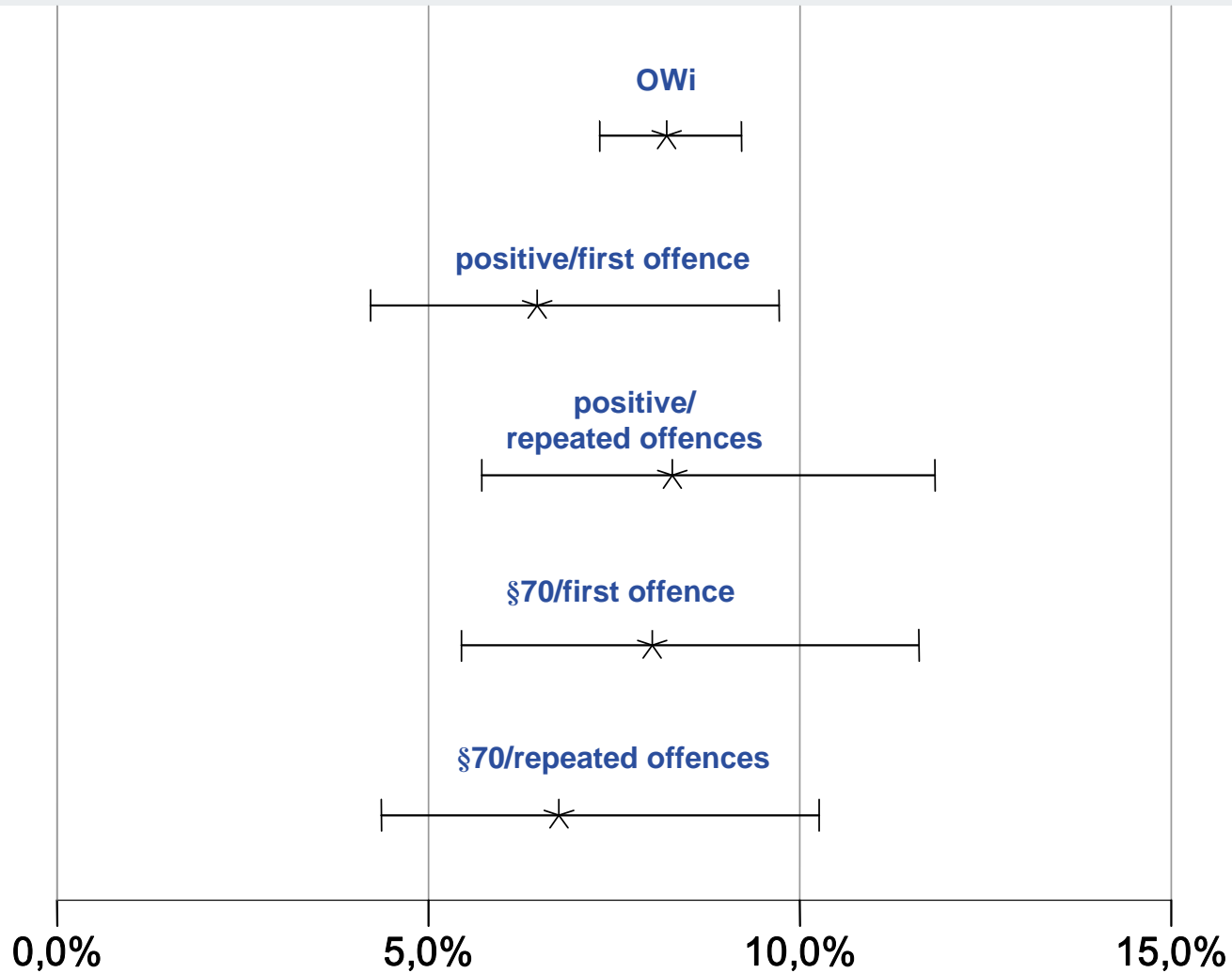
# Recidivism trend



		Alcohol	
		first offence	repeated
<b>MPA</b>	positive	<b>(1) 6.5%</b>	<b>(2) 8.3%</b>
	§ 70	<b>(3) 8.0%</b>	<b>(4) 6.8%</b>
<b>OWi</b>		<b>8.2%</b>	<b>/</b>

**The recidivism speeds of the different groups are very similar.**

# Recidivism rate (with 95% confidence-interval)



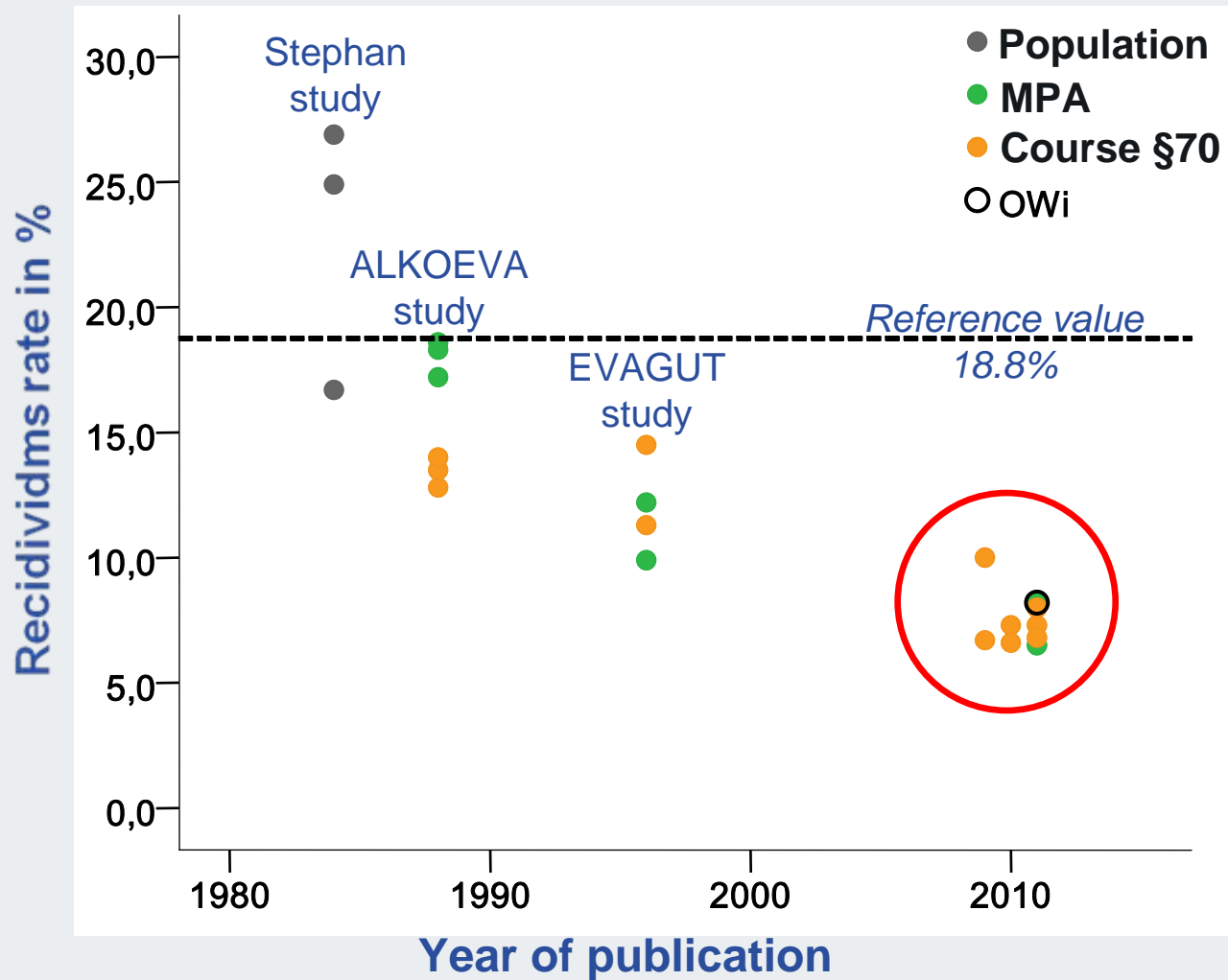
## Age distribution of the groups

	OWi	MPA
- 21 years	14,1%	6,8%
22 - 24 years	9,0%	10,2%
25 - 34 years	21,5%	28,7%
35 - 44 years	23,4%	26,3%
45 - 64 years	28,6%	
65 years and more	3,5%	1,4%
Total	<i>n</i> = 3180	<i>n</i> = 1259

# Summary

- **92% of the drink-drivers assessed do not re-offend within three years.** The positive trend of non-reoffending after MPA over recent decades is confirmed by the results obtained.
- **Despite their poorer starting point,** which is what triggers an MPA in Germany, the **recidivism rates for the MPA groups are not higher than for the OWi group and do not differ compared to each other MPA group.**
- The submitted results can therefore be interpreted as **empirical evidence** of the **predictive reliability** of the MPA for drink-drivers and of the preventive effect of the present German procedure for regranting the driver's license .

# The data position in 2011



# Contact

Verband der TÜV e. V. (VdTÜV)  
Friedrichstraße 136  
10117 Berlin

[www.vdtuev.de](http://www.vdtuev.de)

Telefon: +49 30 760095-400

Fax: +49 30 760095-401

E-Mail: [berlin@vdtuev.de](mailto:berlin@vdtuev.de)